

SITEMAP

CONTENT MANAGEMENT

GX WEBMANAGER 9

Date

February 26, 2008

Target Audience

Application Manager

Developer

Target GX WebManager version

GX WebManager 9.1.4 and later

Document ID and version

GXD0004_en, version 2.01

SUMMARY

A sitemap offers a schematic overview of links to the contents of a website so visitors can find the information they are looking for faster. GX WebManager's 'Sitemap' component generates a sitemap automatically and in real time. Expired pages (based on dates and states) and deleted pages are not part of the overview.

PREREQUISITES

Content Management

- Basic Content Management

RELATED TOPICS

None

VERSION CONTROL

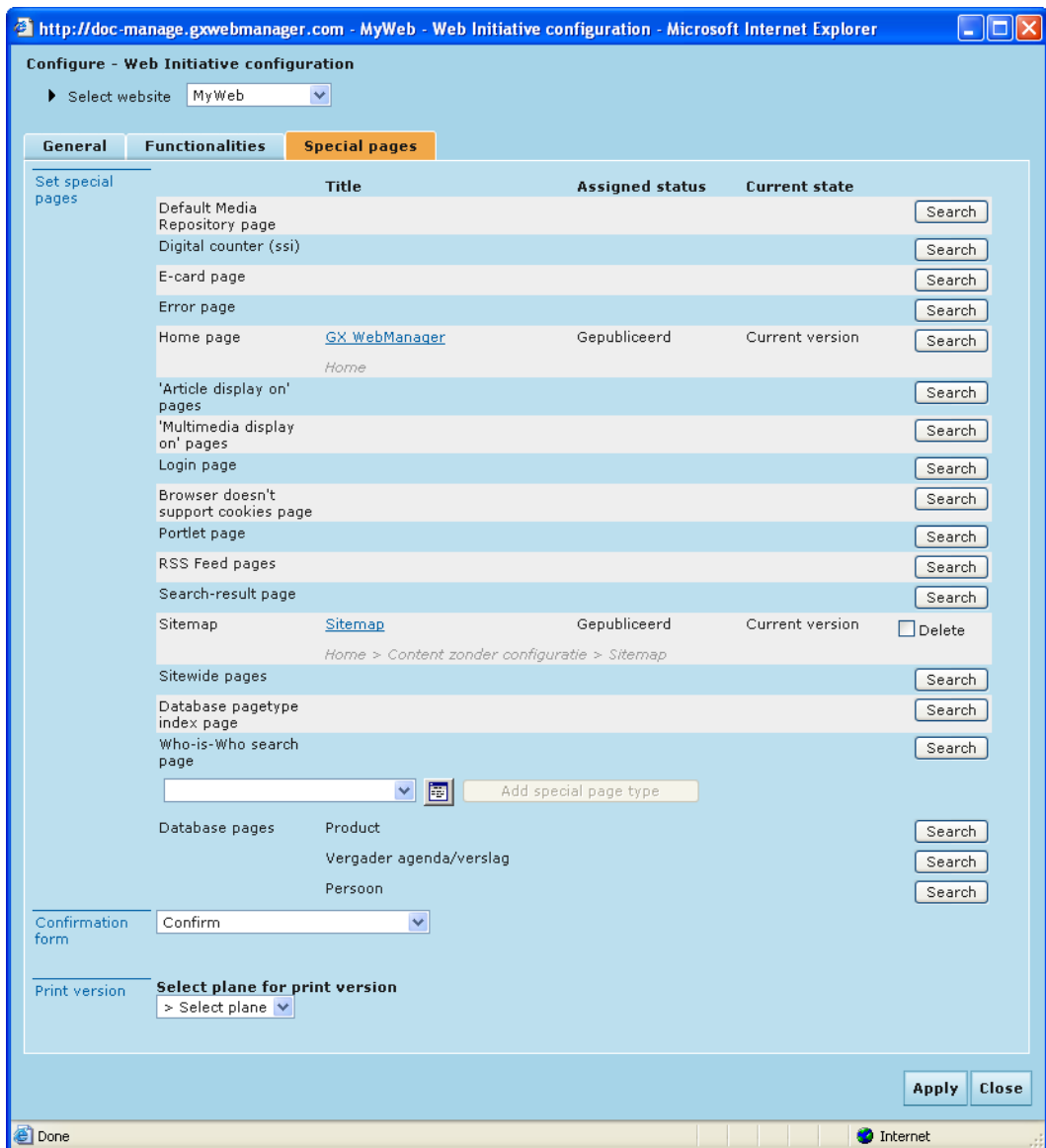
Version	Date	Description
1.0	March 8, 2006	Initial version
1.1	March 27, 2006	Corrections implemented
1.2	July 13, 2006	Updated to GX WebManager 8.3
2.0	June 28, 2007	Updated to GX WebManager 9.1.0
2.0.1	February 26, 2008	Added document ID on title page

TABLE OF CONTENTS

1	Special pages	5
2	Placing a sitemap	7

1 SPECIAL PAGES

Pages with a specific task can be set for different purposes. These pages can be assigned from the Configure > Web Initiative configuration on the [Special pages] tab:



The pages that are important to the sitemap, have the following purposes:

Page	Meaning
Home page	The page that opens up when a visitor accesses a website without entering specific parameters. By default, the home page points to the top page in the site structure, but this can be modified.
Sitemap	The page where the sitemap is shown. This page has to be manually selected and is not a default setting.

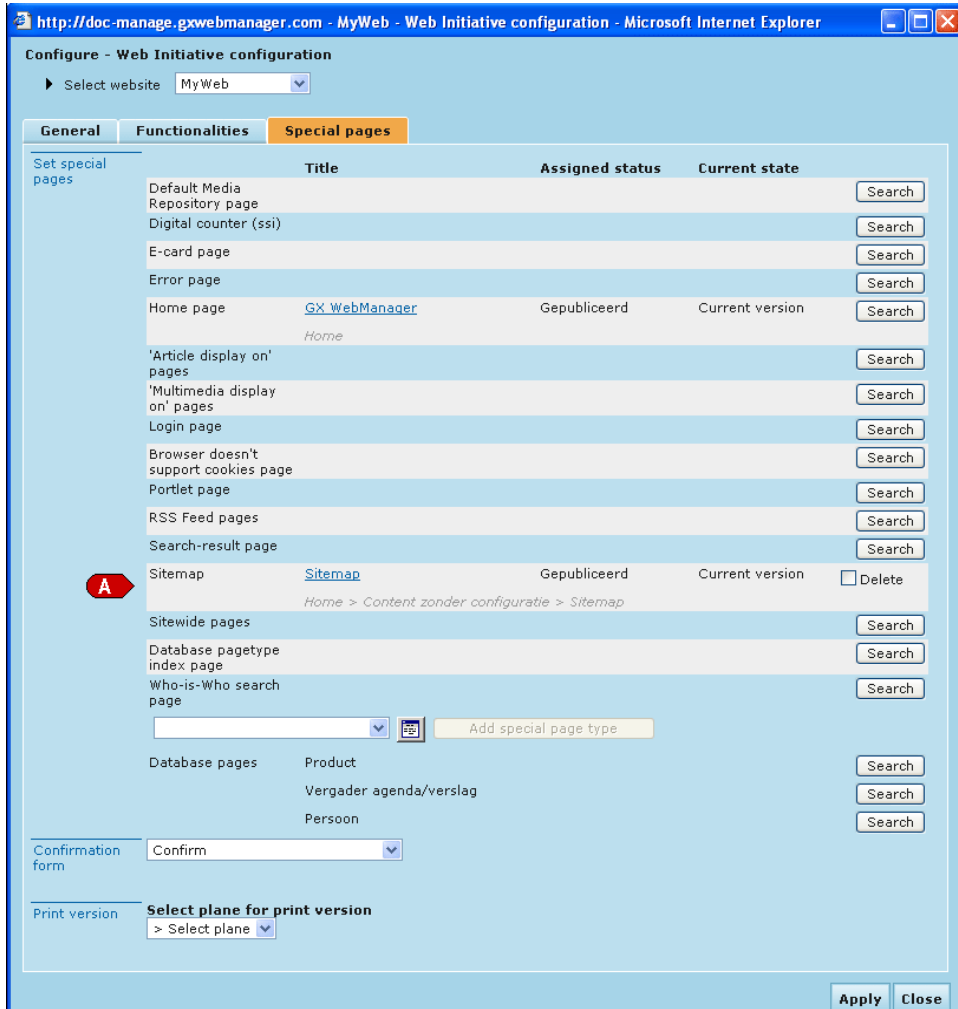
2 PLACING A SITEMAP

To show a sitemap on a page, two steps have to be taken:

- ⇒ Create a page to contain the sitemap. This page may contain content elements but can also be empty:



⇒ Select the Configure > Web Initiative configuration on the [Special pages] tab, to set this page as the 'Sitemap' page (see A in the image below):



The page part order on a page is determined in the `page.jsp` of the design WCB. The code example from the `page.jsp` file below shows that the content is shown first and then the sitemap. This code can be adapted to suit personal preferences. (Tip: Save the original)

```

<body>
  ...
  <div id="content-right">
    <div class="inner_content">
      <h1>${title}</h1>
      <wm:pagePart label="WM content" />
      <!-- indexer: off -->
      <wm:pagePart label="GX sitemap" />
      <!-- indexer: on -->
      <wm:pagePart label="GX mediaItemContent" />
      <!-- indexer: off -->
      <wm:pagePart label="WM searchresults" />
    </div>
  </div>
  ...
</body>

```

The result might look like this:

